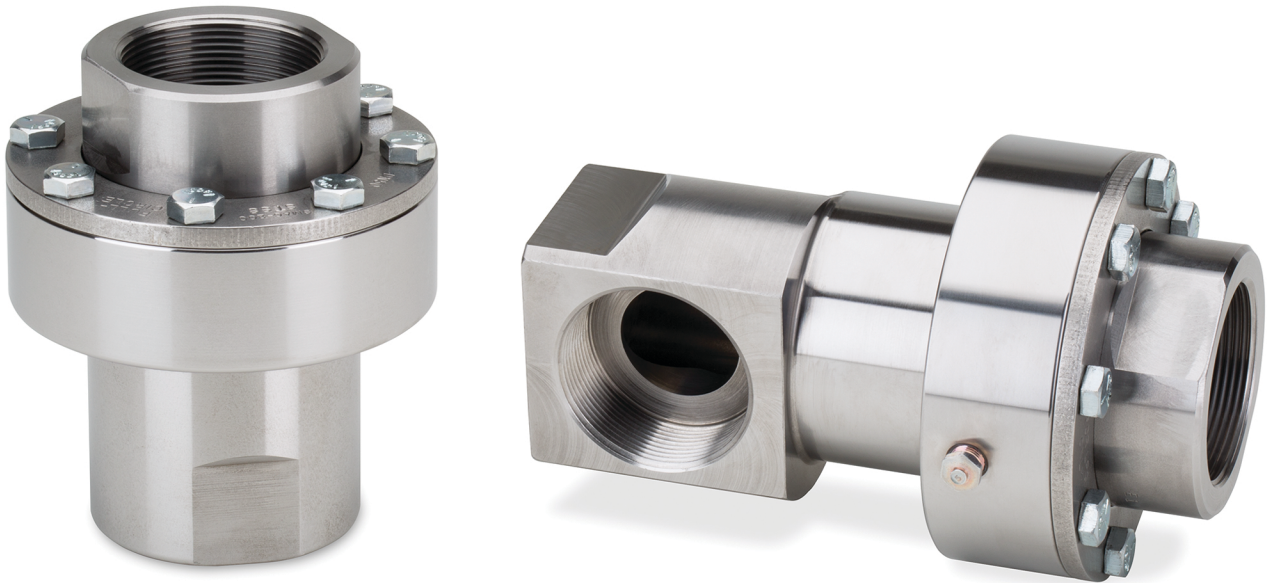


Stainless Steel Swivels for Systems Routinely Blown-down



The SS-series Swivels

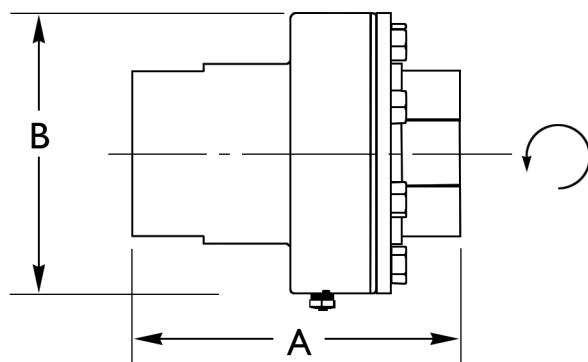
- Stainless Steel housings resistant to environment and moisture-laden air-creep in depressurized systems.
- Corrosion-resistant seal package.
- Three-piece seal tracks movement in three directions, simultaneously. Intermediary seal ring rotates at one-half speed.
- Seal package compensates for wear; held together by system pressure for ease of rotation.
- No wearing lip seals, o-rings, or disc-seals.
- High-load rated ball bearing, maintenance-free.
- 1½ and 2-inch FNPT with combination pipe sizes in straight-through and 90-degree configuration.
- UL-Listed for LP-gas service.



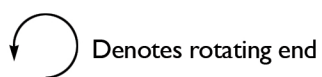
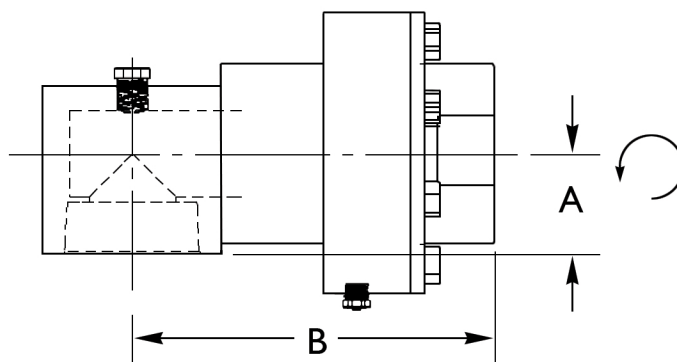
Full-Circle, Inc.

P.O. Box 276, Newbury Park, CA 91319 USA
1299 Lawrence Drive, Newbury Park, CA 91320 USA
Telephone: 805-498-2589 FAX: 805-499-2867
www.fullcircleswivels.com • email: info@fullcircleswivels.com

Straight-through type



90 type°



Model Number	Configuration	Size	Threads	A	B	Weight
SMAC-112SS	90-degree	1½ x 1½	Female	1¾	6 ⅝	15½
SMAC-112STSS	Straight-through	1½ x 1½	Female	5 1⁄16	4 ⅞	11¾
SMAC-200SS	90-degree	2 x 2	Female	1¾	6 ⅝	15½
SMAC-200STSS	Straight-through	2 x 2	Female	5 1⁄16	4 ⅞	11¾
SMAC-112200SS	90-degree	1½ x 2	Female	1¾	6 ⅝	15¼
SMAC-200112SS	90-degree	2 x 1½	Female	1¾	6 ⅝	15¼
SMAC-112200STSS	Straight-through	1½ x 2	Female	5 1⁄16	4 ⅞	11½
SMAC-200112STSS	Straight-through	2 x 1½	Female	5 1⁄16	4 ⅞	11½

For combination pipe sizes (Inlet x Outlet), rotating end is outlet. All dimensions in inches.
Weight in pounds. All threads NPT.

Temperature range: -40°F to +250°F
Hydrostatic test pressure: 2000 psi
Maximum working pressure: 400 psi
U.L. listed for LP-gas service